

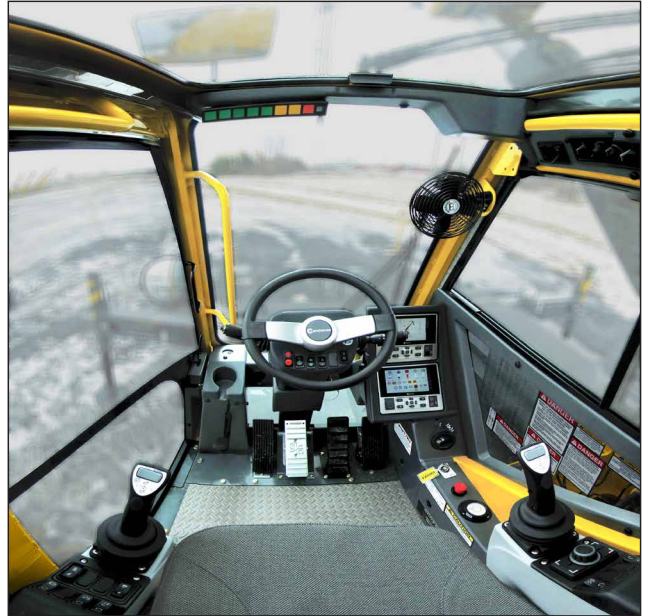
# GRT8100

**Capacity:** 90 t (100 USt)

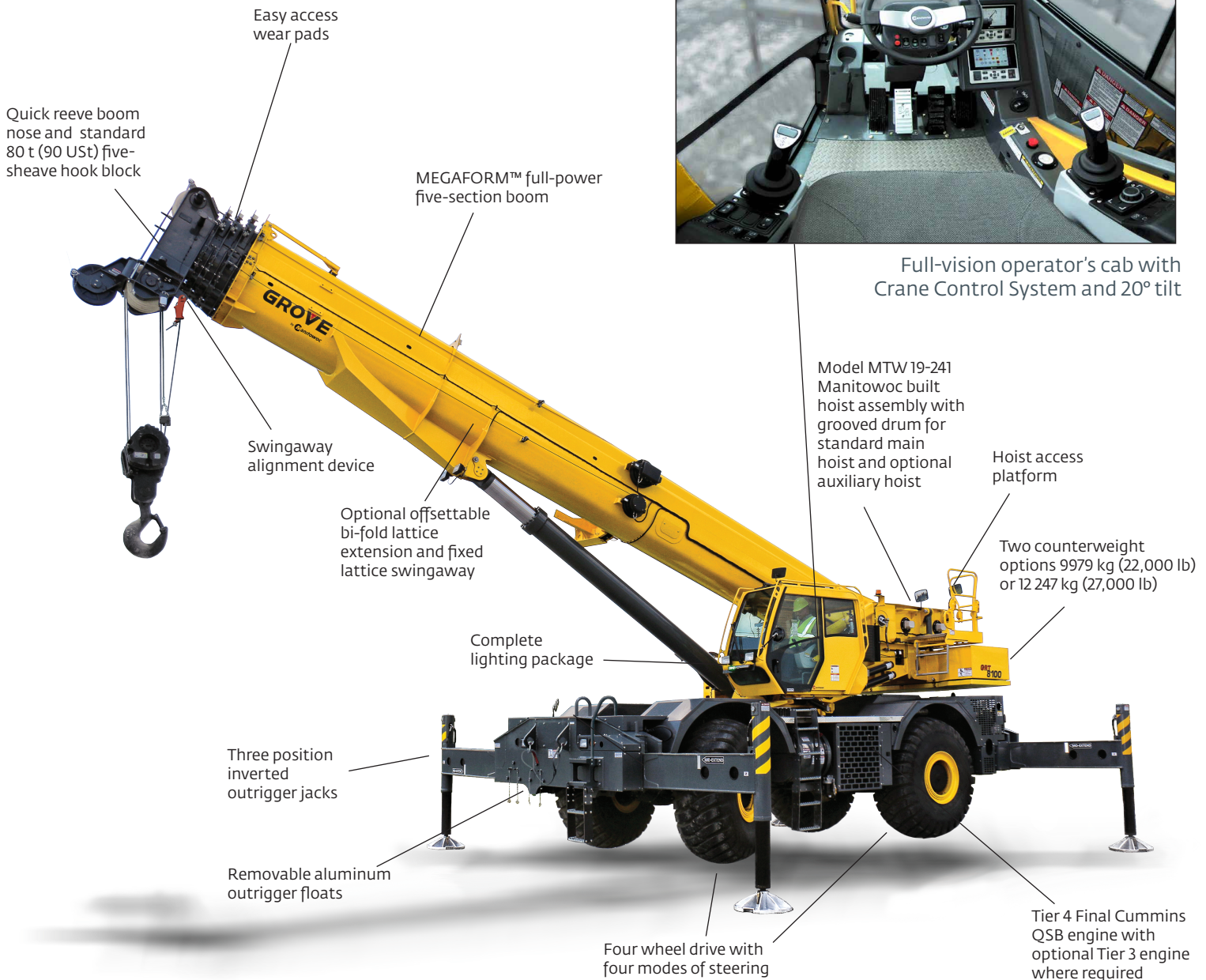
**Main boom:** 12 m – 47 m (39.2 ft – 154.3 ft)

**Maximum boom extension:** 10,1 m – 17,1 m (33 ft – 56 ft)

**Maximum tip height:** 72,9 m (239.4 ft)



Full-vision operator's cab with Crane Control System and 20° tilt



## Benefits

### Unmatched capacity

- 90 t (100 USt) rated capacity (higher rental rate)
- Strongest load charts in class (do more for less)
- 10,9 t (24,050 lb) 360° stationary capacity on rubber (competitive capacity without setting up outriggers, time saving)

### Optimized productivity

- Five-section full-power boom (higher productivity)
- 47 m (154.3 ft) boom length (no need for extension in many cases)
- 7620 kg (16,800 lb) line pull
- 160 seconds to full boom extension (competitive set up time)
- Four modes of steering (improves maneuvering in tight areas)
- 17,1 m + 6,1 m (56 ft + 20 ft) jib, 72,9 m (239.4 ft) max tip height, 51,8 m (170 ft) working radius with 530 kg (1170 lb) capacity

### Outstanding versatility and durability

- 7,3 m (24 ft) outrigger spread with three settings (gets closer to the load)
- Inverted outrigger jack cylinders (protected rod for outstanding jobsite durability)
- Designed for the worldwide market

### Five-section MEGAFORM™ boom

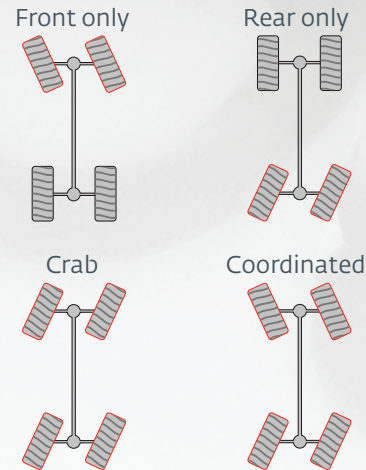
- "U" shaped cross-section that provides a natural cradling position for boom sections
- Large easy-access wear pads provide superior boom alignment when telescoping and allow an excellent transition of weights between sections
- Swingaway alignment device for smooth set up



### Inverted outrigger jacks

- Three position settings: 0%, 50% and 100%
- Outrigger floats: 609,6 mm (24.0 in) in diameter
- Maximum outrigger pad load: 57 290 kg (126,300 lb)
- Outrigger Monitoring System

## Steering modes



## Crane Control System (CCS)

- Hardware and software that integrates the Crane Control with the Rated Capacity Limiter (RCL) to create one system
- Tilttable, full color, high resolution Operating and RCL displays for improved visibility
- Designed for maximum operator comfort
- Graphical setup wizard makes startup quick and easy



## Optional extensions

- 10,0 m - 17,0 m (33 ft - 56 ft) manual bi-fold lattice swingaway extension, offsettable at 0°, 20° and 40°, maximum tip height: 67 m (220 ft)
- 10,0 m - 17,0 m (33 ft - 56 ft) hydraulic bi-fold lattice swingaway extension, hydraulic luffing at 0° to 40°, maximum tip height: 67 m (220 ft)
- One 6 m (20 ft) lattice extension insert, installs between boom nose and either optional extension, maximum tip height: 72,9 m (239.4 ft)

