

GRT880

Capacity: 80 t

Main boom: 12,5 m – 41,0 m

Maximum boom extension: 10,1 m – 17,1 m

Maximum tip height: 68,0 m



Benefits

Unmatched capacity

- 80 t rated capacity
- Competitive load charts in this tonnage class (do more for less)

Optimized productivity

- Four-section full-power boom
- 41,0 m boom length
- 7620 kg line pull
- Four modes of steering (improves maneuvering in tight areas)
- 17,1 m + 6,1 m insert, 68,0 m max tip height

Outstanding versatility and durability

- 7,3 m outrigger spread with three settings (gets closer to the load)
- Inverted outrigger jack cylinders (protected rod for outstanding jobsite durability)
- Designed for the worldwide market



Four - section, modular formed boom

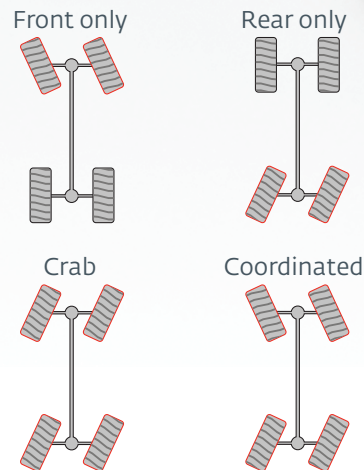
- The GRT880 improves lateral strength of all boom sections by utilizing the next generation in Grove's formed boom technology
- Large easy-access wear pads provide superior boom alignment when telescoping and allow an excellent transition of weights between sections
- Swingaway alignment device for smooth set up



Optional extensions

- 10,0 m - 17,0 m manual bi-fold lattice swingaway extension, offsettable at 0°, 20° and 40°, maximum tip height: 54,7 m
- One 6 m lattice extension insert, installs between boom nose and either optional extension, maximum tip height: 68,0 m

Steering modes



Crane Control System (CCS)

- Hardware and software that integrates the Crane Control with the Rated Capacity Limiter (RCL) to create one system
- Tiltable, full color, high resolution Operating and RCL displays for improved visibility
- Designed for maximum operator comfort
- Graphical setup wizard makes startup quick and easy

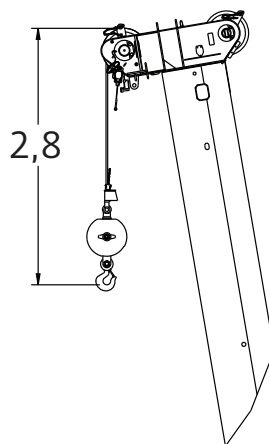
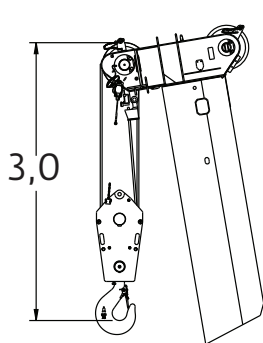
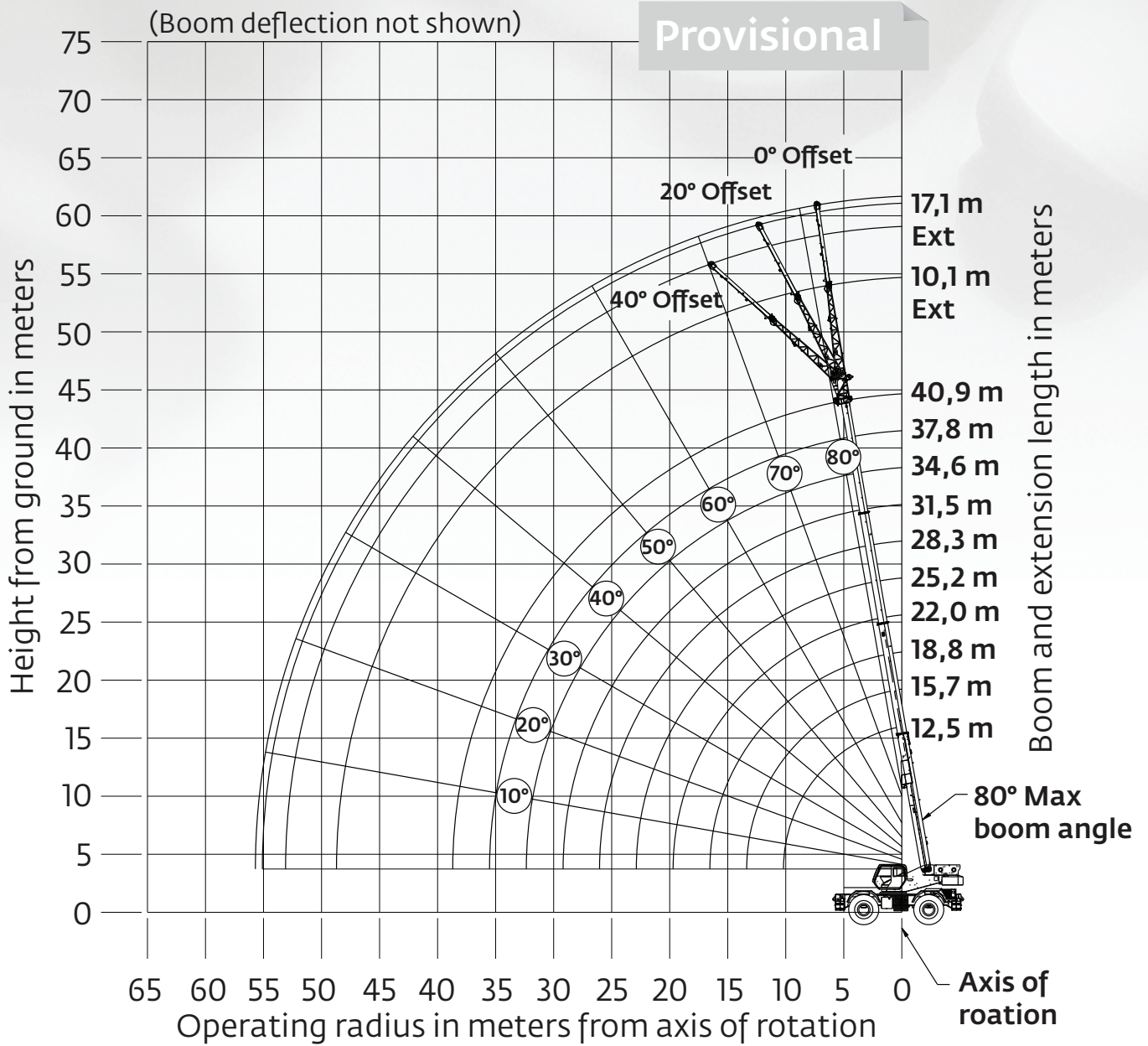


Inverted outrigger jacks

- Three position settings: 0%, 50% and 100%
- Outrigger floats: 609,6 mm in diameter
- Outrigger Monitoring System

Working range





Main boom and extension





Dimensions are for largest Grove furnished hook block and overhaul ball, with anti-two block activated.

Load chart

Provisional

 12,5 m - 41 m
  9979 kg
  100%
  360°

 metric tons (t)
  EN13000

M	12,5	15,7	18,8	22,0	25,2	28,3	31,5	34,7	37,8	41,0
2,5	78,000									
3	72,000	49,450	48,975	31,450						
3,5	69,000	49,450	48,975	31,450	19,150					
4	65,700	49,450	48,975	31,450	19,150					
4,5	61,875	49,450	46,125	31,450	19,150	19,150	19,100			
5	56,500	49,450	43,175	31,450	19,150	19,150	19,100			
6	47,325	47,125	38,350	30,875	19,150	19,150	19,100	18,375	14,925	
7	39,825	36,950	34,000	27,500	19,150	19,150	19,100	17,425	14,525	10,425
8	31,650	30,000	27,725	24,725	19,150	19,150	17,925	16,325	13,650	10,425
9	25,000	24,675	23,175	21,675	19,150	18,225	16,550	14,875	12,825	10,425
10	15,450	20,075	19,725	18,450	18,300	16,850	15,325	13,825	12,075	10,425
12		14,075	13,900	13,700	13,900	13,875	13,000	12,000	10,750	9,395
14			10,175	10,025	10,600	10,950	10,950	10,525	9,640	8,420
16			7,620	7,540	8,090	8,495	8,790	8,900	8,700	7,160
18				5,685	6,265	6,705	7,015	7,255	7,370	6,490
20					4,850	5,275	5,610	5,855	6,045	5,915
22					3,730	4,155	4,485	4,750	4,945	5,100
24						3,255	3,580	3,840	4,050	4,205
26						2,510	2,835	3,090	3,295	3,470
28							2,210	2,460	2,670	2,840
30								1,930	2,135	2,305
32								1,475	1,675	1,845
34									1,280	1,445
36										1,095
38										0,795

NOTE: () Reference radii in feet.
 Shaded area indicates optimal lift capacity within boom length sections.

 12,5 m - 41 m
  9979 kg
  100%
  360°

 metric tons (t)
  85%

M	12,5	15,7	18,8	22,0	25,2	28,3	31,5	34,7	37,8	41,0
2,5	80,000									
3	73,000	49,450	48,975	31,450						
3,5	69,200	49,450	48,975	31,450	19,150					
4	65,825	49,450	48,975	31,450	19,150					
4,5	62,600	49,450	48,975	31,450	19,150	19,150	19,100			
5	57,775	49,450	46,625	31,450	19,150	19,150	19,100			
6	48,150	47,775	41,100	31,450	19,150	19,150	19,100	18,375	14,925	
7	41,150	40,925	36,775	29,200	19,150	19,150	19,100	18,375	14,925	10,425
8	34,475	34,225	32,250	26,675	19,150	19,150	18,825	17,925	14,775	10,425
9	28,150	27,800	27,150	24,050	19,150	19,150	18,125	16,750	14,400	10,425
10	15,450	23,075	22,675	21,300	19,150	18,225	16,875	15,550	13,625	10,425
12		16,125	15,950	15,700	16,125	15,850	14,500	13,425	12,050	10,425
14			11,825	11,675	12,225	12,650	12,500	11,700	10,750	9,425
16			7,785	8,890	9,480	9,875	10,175	10,150	9,640	8,460
18				6,840	7,455	7,875	8,140	8,365	8,470	7,640
20					5,885	6,320	6,635	6,885	7,070	6,910
22					4,650	5,100	5,425	5,675	5,870	6,030
24						4,095	4,430	4,690	4,885	5,030
26						3,265	3,600	3,855	4,070	4,230
28							2,915	3,175	3,380	3,555
30								2,585	2,790	2,965
32								2,075	2,280	2,455
34									1,845	2,015
36										1,630
38										1,295

NOTE: () Reference radii in feet.
 Shaded area indicates optimal lift capacity within boom length sections.