

GRT9165

Capacity: 165 USt (149 t)

Main boom: 44.9ft – 205 ft (13,7 m – 62,5 m)

Maximum boom extension: 36.7 ft – 58.3 ft (11,2 m – 17,8 m)

Maximum tip height: 299.1 ft (88,2 m)

Quick-reeve boom nose
and standard 110 USt (100 t)
seven-sheave hook block

Greaseless, six-section, TWIN-LOCK™,
MEGAFORM™ boom

Standard 36.7 ft – 58.3 ft (11,2 m – 17,8 m)
bi-fold extension

Three position
inverted
outrigger jacks

Two-wheel /four-wheel drive with
six-wheel steer



New "Wide Body" operator's cab with
Updated Crane Control System and 20° tilt

Manitowoc built hoist
assembly with
grooved drum for
standard main hoist and
optional auxiliary hoist

Hoist access
platform

56,800 lb (25 765 kg)
hydraulically removable
counterweight

EPA Compliant
Cummins QSB6.7L Tier
4F (Stage 5) engine

Benefits

Unmatched capacity

- 165 USt (149 t) rated capacity
- Industry leading load charts in this tonnage class

Optimized productivity

- Six-section TWIN-LOCK™, MEGAFORM™ boom
- 205 ft (62,48m) boom length
- 17,160 lb (7783 kg) line pull
- Four modes of steering (improves maneuvering in tight areas)
- 58.3 ft (17,8 m) manual extension and 26.2 ft (8 m) insert for a 299 ft (91,13 m) maximum tip height

Outstanding versatility and durability

- 27.8 ft (8, 48 m) outrigger spread with three settings allows you to position closer to the load
- Inverted outrigger jack cylinders provide a protected rod for outstanding job site durability

Six-section, MEGAFORM™ boom

- Six-section, MEGAFORM™ design utilizing the time proven TWIN-LOCK™ boom pinning system
- Laser hybrid welded for weight savings, improved load chart and higher quality
- Incorporates the latest boom configurator pinning system for easy/simplified pinning of the telescope sections

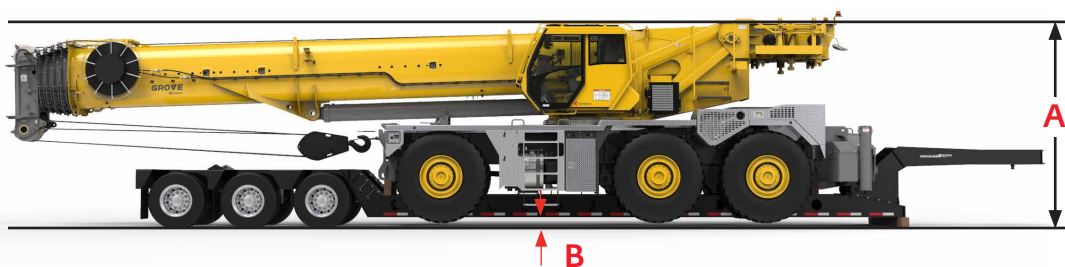
Optional extensions

- 36.7 ft - 58.3 ft (11,2 m - 17,8 m) bi-fold swingaway, hydraulically offset from 0° to 50°, maximum tip height: 273 ft (83,2 m)
- One 26.2 ft (8 m) lattice extension insert, installs between boom nose and either optional extension, maximum tip height: 299 ft (91,13 m)

Inverted outrigger jacks

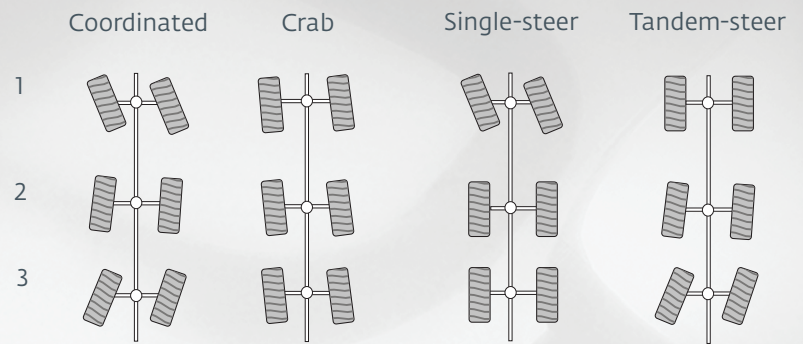
- Three position settings: 0%, 50% and 100%
- Outrigger floats: 22.0 in (558,86 mm) in diameter
- Outrigger Monitoring System

Convenient transport



B DIMENSION	A DIMENSION			
	GROVE	TADANO	LINKBELT	GROVE
	GR T9165	GR-1600XL-2	RTC-80160 SLL	RT9150E
18' Beam trailer	13' 10.5" (4229 mm)	13' 11" (4242 mm)	13' 10" (4216 mm)	15' 2" (4623 mm)
24" Beam trailer	14' 4.5" (4382 mm)	14' 5" (4394 mm)	14' 4" (4369 mm)	15' 8" (4775 mm)

Steering modes



Updated Crane Control System (CCS)

- Hardware and software that integrates the Crane Control with the Rated Capacity Limiter (RCL) to create one system
- Tilting RCL screen mounted on "RAM" swing arm
- Operating screen within center of steering wheel
- Graphical setup wizard makes startup quick and easy



New "Wide-Body" cab

- 3 in wider than previous model for more comfort
- Operating screen located within center of tilt steering wheel
- Adjustable RCL screen mounted on "RAM" swing arm
- Storage shelving located in the rear of the cab
- Coat hook
- Optional Operator Comfort Package includes: AM/FM radio with Bluetooth, USB charging port, swiveling cup holder, Windshield sun visor