

**EXTENDO 1056<sub>X</sub>**

**PETTIBONE**

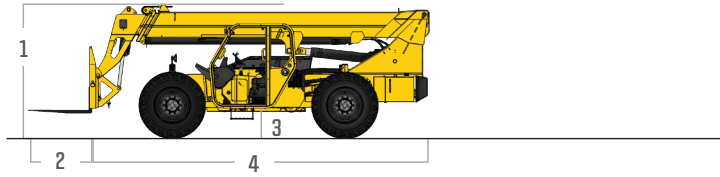
# 1056<sub>X</sub> **EXTENDO**

Defined by rugged design and efficient operation, the Pettibone® Extendo™ 1056X offers superior longevity and performance for the long haul. Known for leading hydraulics that provide exceptional cycle times and controllability, the Extendo 1056X also offers strong machine and boom stability for enhanced safety.

**X-SERIES**

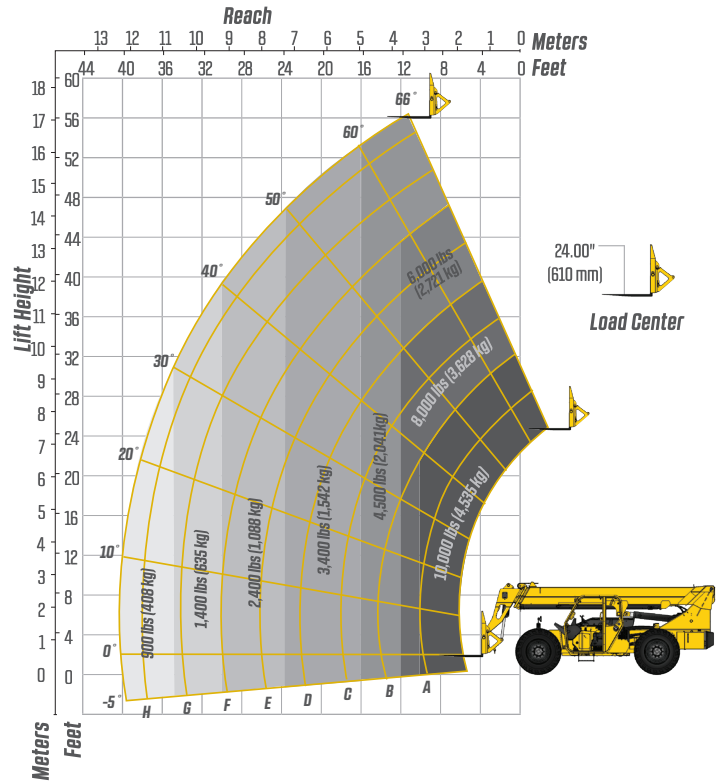


# SPECIFICATIONS



DIMENSIONS		
1	<b>Overall Height</b>	8' 11" (272 cm) boom down
2	<b>Fork Carriage</b>	48" (122 cm) standard
3	<b>Ground Clearance</b>	18" (46 cm)
4	<b>Overall Length</b>	22' 11" (699 cm) to fork frame
	<b>Overall Width</b>	8' 6" (259 cm)
	<b>Pallet Forks</b>	2.25x4x48" standard
	<b>Approximate Operating Weight</b>	27,500 lbs (12,474 kg)
ENGINE		
	<b>Model/Power</b>	74 HP (55 kW) Cummins® Tier 4 turbo diesel with DOC muffler
	<b>Fuel Tank</b>	30 gal. (114 L)
HYDRAULICS		
	<b>System</b>	Pressure comp, axial piston pump
	<b>Features</b>	Fully proportional functions, auxiliary boom tip hydraulics, quick disconnect for attachments
	<b>Controls</b>	Single joystick, pilot operated
PERFORMANCE		
	<b>Max Load Capacity</b>	10,000 lbs (4,536 kg)
	<b>Maximum Lift Height</b>	56' (1,707 cm)
	<b>Landing Height</b>	52' (1,585 cm)
	<b>Maximum Forward Reach</b>	40' (1,219 cm) at 24° LC
	<b>Below Grade Reach</b>	3' (92 cm)
	<b>Maximum Travel Speed</b>	15.2 mph (24.5 km/h)
	<b>Turning Radius</b>	14' 4" (437 cm)
	<b>Drawbar Pull (GVW)</b>	26,250 lbs (11,907 kg)
	<b>Frame</b>	20° of leveling (10° right and left), rear axle stabilization system
	<b>Transmission</b>	Dana® VDT12000 Series, 3-speed Powershift, forward & reverse
	<b>Axles</b>	Dana 212 Series; 4-wheel drive, 45% limited slip front differential
	<b>Steering</b>	4 wheel, 2 wheel, and crab steer
	<b>Brakes</b>	Oil-immersed inboard disc service brakes, integral front SAHR park brake
	<b>Tires</b>	13.00 x 24, 16 ply, G2 tread air-fill standard
	<b>Boom</b>	4-section, slide pad; automatic fork leveling without slave cylinder

# LIFT PERFORMANCE



# FEATURES & OPTIONS

## OPERATOR CAB

Adjustable suspension seat with seat belt	Split door design
Single multifunction hydraulic joystick	Flat, bolt-in glass
Analog/LCD gauge cluster	Lockable storage area under seat

## AVAILABLE ATTACHMENTS

Pallet, lumber or block forks	Standard carriage
Utility bucket	Side-swing carriage (+/- 60°)
Side tilt carriage (+/- 10°)	Hydraulic fork positioning carriage
Truss boom	

## OPTIONS

Premium gauge cluster w/7" digital display	117 HP Cummins diesel engine w/SCR & DEF
Rear-view camera system	74 HP Deutz® diesel engine
High output LED lighting package	Sling hook
Solid or foam filled tires	Electrical to boom tip
Various tire tread options available	Bolt-on rear pintle hitch
Enclosed cab, HWD (A/C available)	

\* Specifications are subject to change.

**PETTIBONE®**

## PETTIBONE, LLC

1100 Superior Avenue  
Baraga, MI 49908

P: 800.467.3884  
info@gopettibone.com  
www.gopettibone.com



<b>1 Year</b>	Full machine and attachment
<b>2 Years</b>	Powertrain and major hydraulic components
<b>3 Years</b>	Machine structure

# WARRANTY