

EXTENDO 944X

PETTIBONE

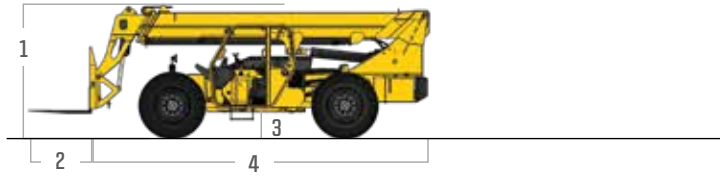
944X **EXTENDO**

Defined by rugged design and efficient operation, the Pettibone® Extendo™ 944X offers superior longevity and performance for the long haul. Known for leading hydraulics that provide exceptional cycle times and controllability, the Extendo 944X also offers strong machine and boom stability for enhanced safety.

X-SERIES

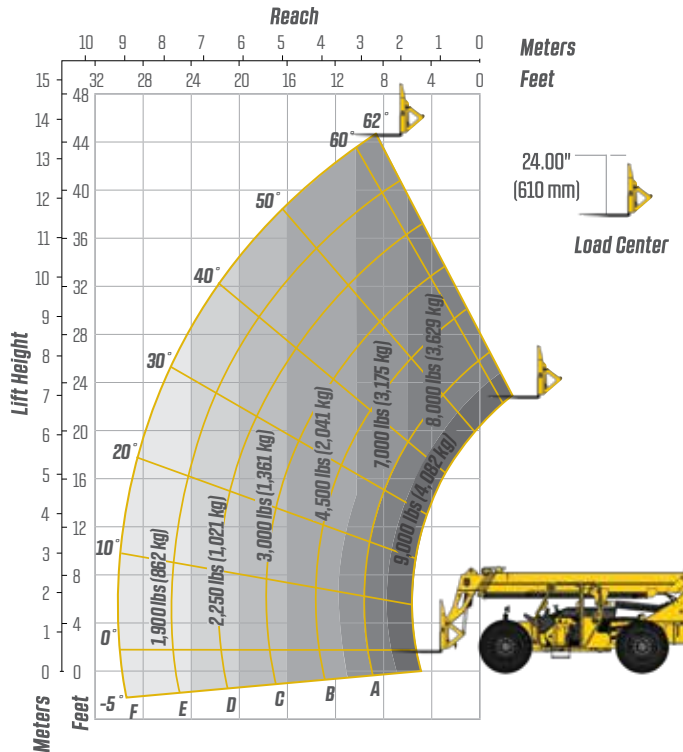


SPECIFICATIONS



DIMENSIONS		
1	Overall Height	8' 3" (251 cm) boom down
2	Fork Carriage	48" (122 cm) standard
3	Ground Clearance	18" (46 cm)
4	Overall Length	22' (671 cm) to fork frame
	Overall Width	8' 6" (259 cm)
	Pallet Forks	2.25x4x48" standard
	Approximate Operating Weight	22,000 lbs (9,979 kg)
ENGINE		
	Model/Power	74 HP (55 kW) Cummins® Tier 4 turbo diesel with DOC muffler
	Fuel Tank	30 gal. (114 L)
HYDRAULICS		
	System	Pressure comp, axial piston pump
	Features	Fully proportional functions, auxiliary boom tip hydraulics, quick disconnect for attachments
	Controls	Single joystick, pilot operated
PERFORMANCE		
	Max Load Capacity	9,000 lbs (4,082 kg)
	Maximum Lift Height	44' 6" (1,356 cm)
	Landing Height	41' (1,250 cm)
	Maximum Forward Reach	30' (915 cm) at 24° LC
	Below Grade Reach	3' (92 cm)
	Maximum Travel Speed	15.2 mph (24.5 km/h)
	Turning Radius	14' 1" (429 cm)
	Drawbar Pull (GVW)	21,700 lbs (9,843 kg)
	Frame	24° of leveling (12° right and left), rear axle stabilization system
	Transmission	Dana® VDT12000 Series, 3-speed Powershift, forward & reverse
	Axles	Dana 212 Series; 4-wheel drive, 45% limited slip front differential
	Steering	4 wheel, 2 wheel, and crab steer
	Brakes	Oil-immersed inboard disc service brakes, integral front SAHR park brake
	Tires	13.00 x 24, 16 ply, G2 tread air-fill standard
	Boom	3-section, slide pad; automatic fork leveling without slave cylinder

LIFT PERFORMANCE



FEATURES & OPTIONS

OPERATOR CAB

Adjustable suspension seat with seat belt	Split door design
Single multifunction hydraulic joystick	Flat, bolt-in glass
Analog/LCD gauge cluster	Lockable storage area under seat

AVAILABLE ATTACHMENTS

Pallet, lumber or block forks	Standard carriage
Utility bucket	Side-swing carriage (+/- 60°)
Side tilt carriage (+/- 10°)	Hydraulic fork positioning carriage
Truss boom	

OPTIONS

Premium gauge cluster w/7" digital display	Enclosed cab, HWD (A/C available)
Rear-view camera system	117 HP Cummins diesel engine w/SCR & DEF
High output LED lighting package	Sling hook
Solid or foam filled tires	Electrical to boom tip
Various tire tread options available	Bolt-on rear pintle hitch

* Specifications are subject to change.

PETTIBONE®

PETTIBONE, LLC

1100 Superior Avenue
Baraga, MI 49908

P: 800.467.3884
info@gopettibone.com
www.gopettibone.com

**1 - 2 - 3
WARRANTY**

1 Year	Full machine and attachment
2 Years	Powertrain and major hydraulic components
3 Years	Machine structure

WARRANTY