

PETTIBONE®



X-SERIES

TELEHANDLERS

X-SERIES TELEHANDLERS

THE

X-FACTOR!

IN JOBSITE PERFORMANCE

The next generation X-Series telehandlers build upon the traditional rock-solid Pettibone® design, delivering the same dependability users have come to expect for decades, while providing several new design enhancements to meet the needs of today's contractors.

Engineered for the rigors of tough jobsites, Pettibone telehandlers consistently reach heavy loads to high, difficult positions in applications ranging from masonry and construction to supply yards and utilities.



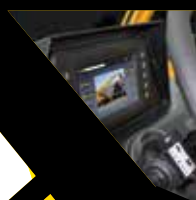
EXTENDO

Defined by a rugged design and efficient operation, the Pettibone Extendo™ offers superior longevity and performance for the long haul. Known for leading hydraulics that provide exceptional cycle times and controllability, Extendo also offers strong machine and boom stability for enhanced safety.



TRAVERSE

The Pettibone Traverse™ is the only new telehandler on the market today that features an extendable, traversing boom that moves loads by traveling horizontally. This capability allows users to precisely place loads at full lift height without having to coordinate multiple boom functions.



// POWER ON THE SIDE

X-Series telehandlers are powered by reliable Tier 4 Final turbocharged diesel engines. Mounted on a side pod that offers easy service access, the engine placement maintains excellent curbside visibility and ground clearance.

MOVING FORWARD

The Horizontal Traversing Boom

The Pettibone Traverse provides **up to 70 inches of horizontal boom transfer**, the industry's only machine with this capability. Along with greater precision and safety, a key benefit is that the Traverse's specified lift height is the same as the landing height.

With a traditional fixed boom pivot, the true landing height is generally several feet less than the advertised lift height, as operators must account for withdrawing forks out of the load with enough rearward travel for the fork tips to clear the landing zone.





BOOMING ENHANCEMENTS

The *Extendo* and *Traverse* both feature a newly designed boom with formed boom plates to offer greater strength with less weight, along with several other optimizations:

Boom deflection minimized for better control and accuracy placing loads

Boom overlap nearly doubled from previous models to provide smoother operation and reduce contact forces on wear pads

Fastener-less wear pads simplify service

Bottom-mounted external extend cylinder significantly reduces load on wear pads; cylinder location also provides better service access to internal boom components

Heavy-duty extension chains help ensure stable boom functions and longevity

Compression tilt design allows for a smaller bore cylinder with same tilt force

DRIVETRAIN FEATURES

Dana® high steer axles provide excellent tractive effort

Dana VDT12000 Powershift transmission – 3 speeds, forward and reverse

Full time 4-wheel-drive with limited-slip front axle differential

TOUGH PERFORMER

Staying true to the core of Pettibone toughness, the X-Series features a box design chassis that delivers exceptional strength and performance.

- **Tight steer angle** capability provides efficient turning radius
- **Capable 12,000-lb capacity** rating for 1246 and 1258 machine models
- **Damage-resistant**, all-steel fuel and hydraulic tanks
- **Ample fuel volume** for a full day's work at 100% load
- **Pintle hitch mount** adds versatility for towing



Tight Turning

// TRIED & TRUE HYDRAULICS

Pettibone telehandlers have long been recognized for a hydraulic circuit that delivers exceptional controllability. That tradition continues with the X-Series, which provides the same overall operating feel while enhancing efficiency and cycle speeds.

Hydraulic System:

- **Cylinder cushioning** dampens the end of strokes – both extending and retracting – to prevent hard, jarring stops and avoid both wear-and-tear and potential load spills
- **Single lift cylinder** provides operator with clear sight lines
- **Twin lines** for tilt and auxiliary plumbing

Electrical Features:

- **Split-system electrical panels** allow for easier service of individual circuits
- Heavy-duty bright **LED lighting**
- Weather-sealed connections
- **USB accessory plug** in cab
- **12-volt accessory plug** in engine bay



OPERATOR'S STATION

The X-Series operator cab maintains Pettibone's ergonomic seat, pedal, joystick and steering wheel positions. It features an all-steel interior with water-resistant components for easy washdown.

New analog/LCD gauge cluster

Available as open canopy or enclosed heated cab with or without AC

Enhanced climate control system for operator comfort

Flat, bolt-in glass can easily be removed or replaced

Split door design allows upper half to lock in the open position

Openable rear window improves air flow while keeping cab dry

Lockable storage area under seat for manuals, gloves, tools

SERVICE FEATURES

Easy access to all filters and fluid level indicators

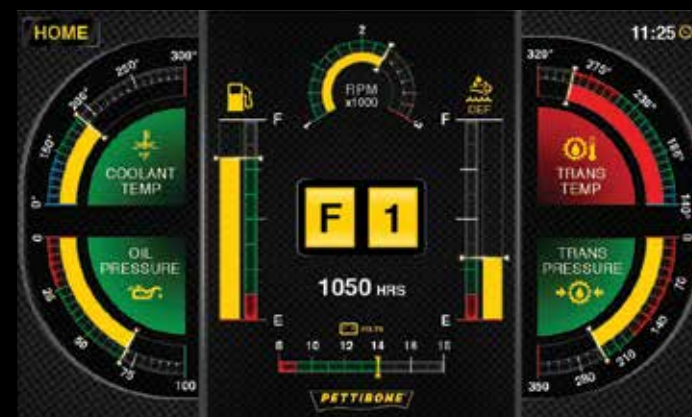
Lockable fuel-fill in clean, accessible location

Inside of boom easily accessible for service

Non-tensioned boom hoses offer long service life

OPTIONS

- **Premium gauge cluster upgrade** with 7-inch digital display
- **Rear-view camera system** (included with digital display, or available as add-on to standard gauges)
- **Variety of attachments available**
- **Sling hook for additional securing of load**
- **Electrical to boom tip** (second hydraulic circuit, lighting, camera)





PETTIBONE, LLC
1100 Superior Avenue
Baraga, MI 49908

P: 800.467.3884
info@gopettibone.com
www.gopettibone.com

SPECIFICATIONS

	HORSEPOWER	MAX LOAD CAPACITY	MAX LIFT HEIGHT	MAX FORWARD REACH
Traverse				
Traverse T944X	74 HP (55 kW)	9,000 lbs (4,082 kg)	44' 6" (1,356 cm)	35' 10" (1,092 cm)
Traverse T944X - 117hp	117 HP (87 kW)	9,000 lbs (4,082 kg)	44' 6" (1,356 cm)	35' 10" (1,092 cm)
Traverse T1246X	117 HP (87 kW)	12,000 lbs (5,443 kg)	46' 6" (1,417 cm)	35' 10" (1,092 cm)
Traverse T1258X	117 HP (87 kW)	12,000 lbs (5,443 kg)	58' 6" (1,783 cm)	47' 10" (1,458 cm)
Extendo				
Extendo 944X	74 HP (55 kW)	9,000 lbs (4,082 kg)	44' 6" (1,356 cm)	30' (915 cm)
Extendo 944X - 117hp	117 HP (87 kW)	9,000 lbs (4,082 kg)	44' 6" (1,356 cm)	30' (915 cm)
Extendo 1056X	74 HP (55 kW)	10,000 lbs (4,536 kg)	56' 6" (1,722 cm)	40' (1,219 cm)
Extendo 1056X - 117hp	117 HP (87 kW)	10,000 lbs (4,536 kg)	56' 6" (1,722 cm)	40' (1,219 cm)
Extendo 1246X	117 HP (87 kW)	12,000 lbs (5,443 kg)	46' 6" (1,417 cm)	30' (915 cm)
Extendo 1258X	117 HP (87 kW)	12,000 lbs (5,443 kg)	58' 6" (1,783 cm)	42' (1,280 cm)

*Specifications are subject to change