



# GMK3060

Grove Mobile Crane Product Line

# GMK3060

The compact taxi crane



GMK3060

Grove Maniowoc National Crane Potain



# GMK3060

What's new compared to GMK3055?

- ▶ New Crane Control System
- ▶ Facelift (cabs & decking)
- ▶ 2t more counterweight
- ▶ Boom configurator



# GMK3060

## Crane Control System (CCS)



- ▶ 2 Full graphic displays
- ▶ Vertically mounted for better visibility



- ▶ Jog dial for easier input
- ▶ New ergonomic joysticks

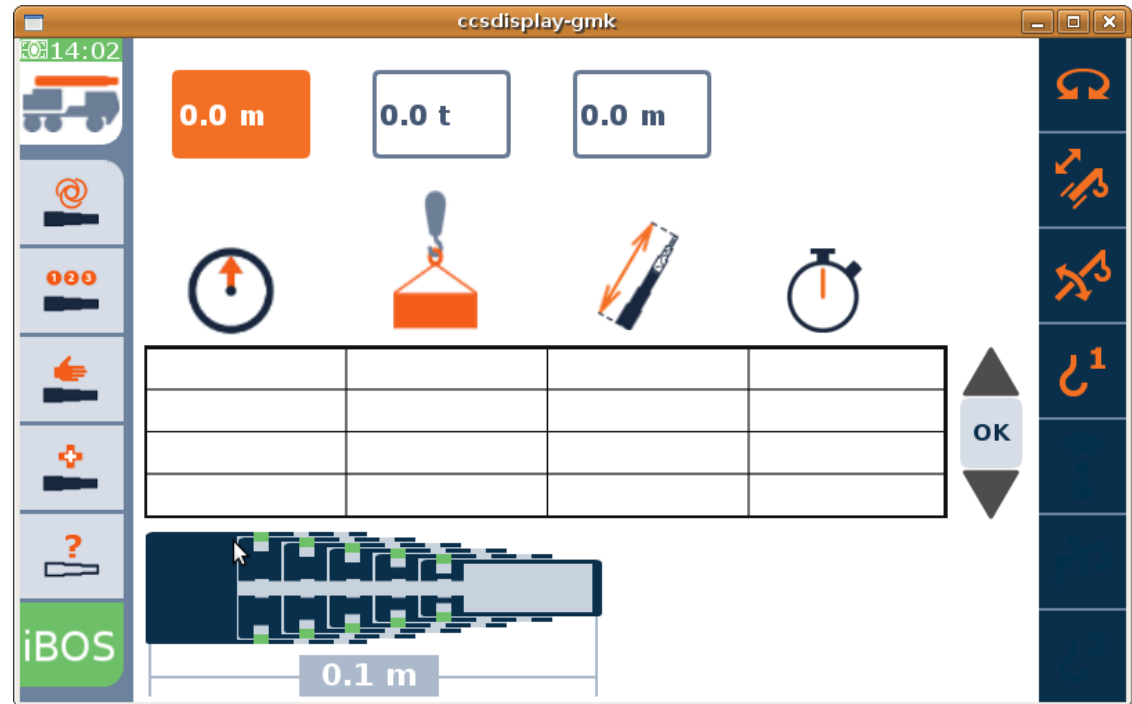


# GMK3060

## Boom configurator main screen

The boom configurator allows inputs for:

- ▶ Radius
- ▶ Load
- ▶ Boom length



**The boom configurator always selects out of the previously entered rigging configuration (outrigger base, counterweight, jibs,...)!**

# Boom configurator

## Load Input – Example (GMK3060)

- ▶ In this case the operator knows that he needs to lift a 15t load:

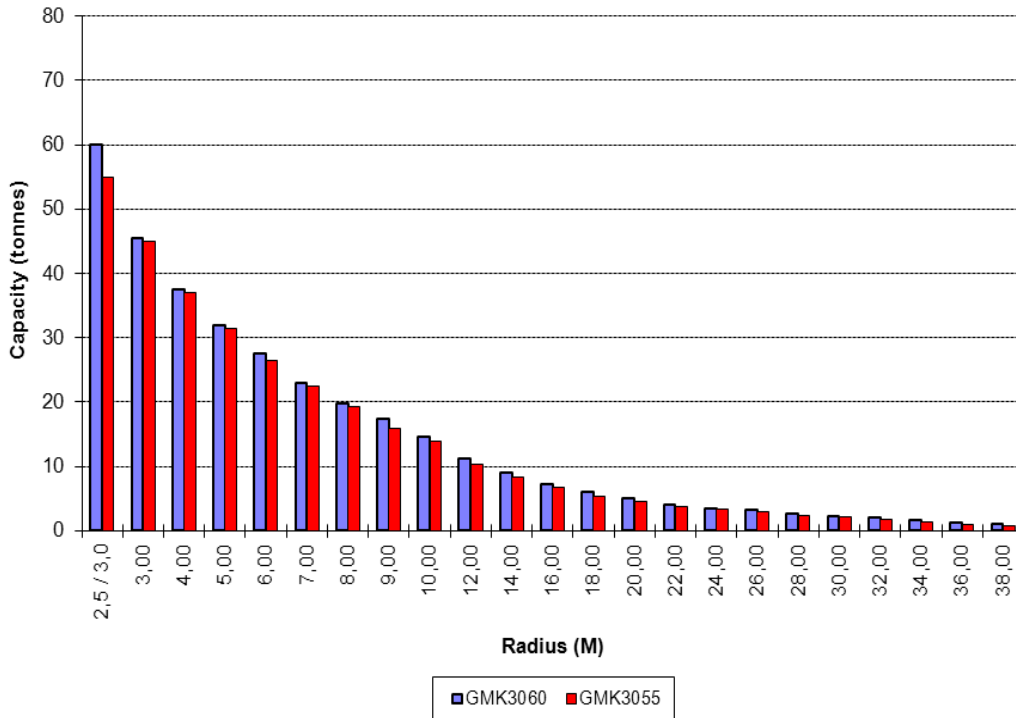
The screenshot shows the 'ccsdisplay-gmk' interface. At the top, three input fields show '0.0 m', '15.0 t', and '0.0 m'. Below these are icons for a crane hook, a boom, and a stopwatch. A table displays four configuration options with values for radius, load, boom length, and sequence time. The third option is highlighted in green. Below the table is a 3D boom diagram with a '0.1 m' dimension. The interface includes a vertical toolbar on the left with icons for crane, zoom, menu, hand, add, and help, and a vertical toolbar on the right with icons for refresh, zoom in, zoom out, and a '1' icon. An 'OK' button is located to the right of the table.

9.0	15.2	23.2	3.5
6.0	16.1	29.6	4.3
9.0	15.0	13.0	0.5
9.0	15.8	13.0	0.6

**The boom configurator offers always best radius, maximum load, longest/shortest boom and the quickest sequence**

# GMK3060

New improved load chart with 2t add. ctw



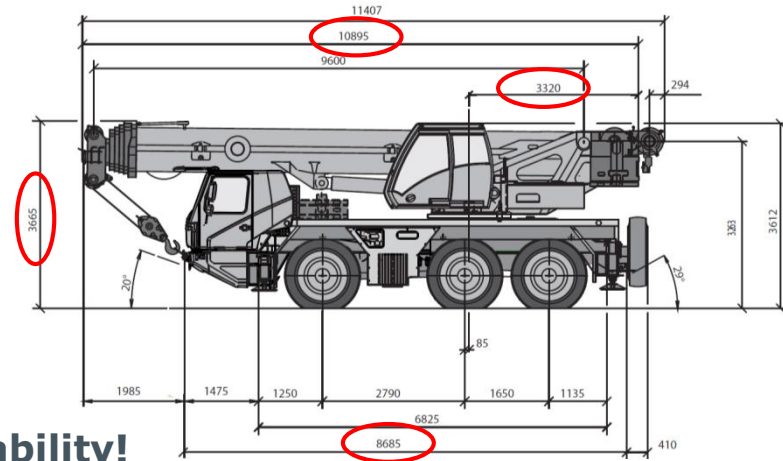
- ▶ Overall improvement approx. **6%** and on radius comparison approx. **9%** with 2t more counterweight compared to GMK3055

# GMK3060

## Compact dimensions

### Most compact 3 axle AT crane

- ▶ Shortest overall length
- ▶ Shortest carrier
- ▶ Shortest tail swing
- ▶ Standard 2,55m width
- ▶ Lowest height (can be lowered to 3,54m!)
- ▶ Very low turning radii for excellent manoeuvrability!





# GMK3060

## Summary



- ▶ Compact dimensions
- ▶ Best taxi crane
- ▶ 6% better chart with 2t additional counterweight
- ▶ New Crane Control System
- ▶ Better ergonomic layout for operator
- ▶ Simplified operation with new boom configurator
- ▶ Face lift

### New standard features:

- ▶ Working range limiter
- ▶ Work lights for outrigger beams
- ▶ Full graphic display for LMI
- ▶ Full graphic display in carrier cabin

